

# Aussie Slang

Match the slang with its definition

1. How's it going?
2. s up?
3. Mozzie
4. Dunny
5. G'day mate.
6. Where ya goin'?
7. What'll it be?
8. Give me a buzz.
9. That's a rip off!!!
10. I feel crook.



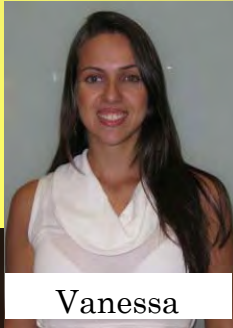
- A. I feel sick.
- B. Mosquito
- C. Hello
- D. Where are you going? What is your destination?
- E. What would you like? (used in shops)
- F. Telephone me.
- G. How is your life at the moment? (often said after g'day)
- H. What is up? - What is happening in your life? (used after you say hello)
- I. Toilet
- J. That is too expensive!!!

## Welcome to ILSC Brisbane!!!

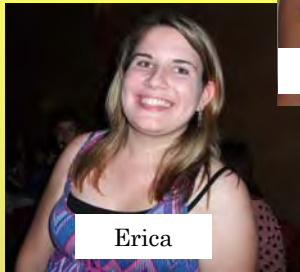


## Lifestyle Pack 2011

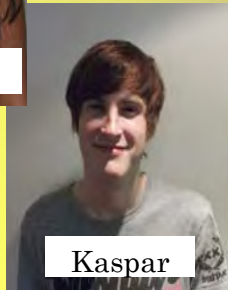
# Activities Coordinator



Vanessa



Erica



Kaspar

# Conversation Partners

Here to help you practice  
and improve your English



Adam



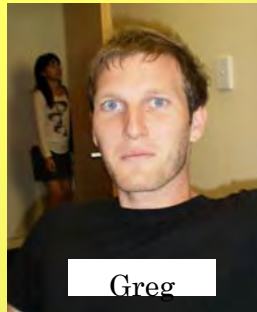
Christina



John



Simon



Greg

# Getting Around Brisbane and Australia



[www.jetstar.com.au](http://www.jetstar.com.au)



Daily specials between 12-1pm  
[www.virginblue.com.au](http://www.virginblue.com.au)

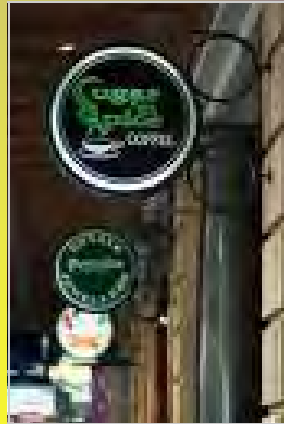


Use [www.webjet.com.au](http://www.webjet.com.au) to find the  
cheapest flights available.



Use [www.ourbrisbane.com.au](http://www.ourbrisbane.com.au) to find out  
what is happening in Brisbane. Festivals,  
Movies, Free Events.

# ILSC Friend



Enjoy a Free Coffee.  
!!!Only for use at the  
ADELAIDE Street Shop!!



## 18+ Card

Don't risk losing your **passport** at the pub. Get an 18+ Card.













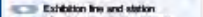









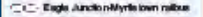

Ask Naomi—Activities Coordinator for a form.

**Cost - \$30**

## Backroads Touring Company Student Tour Schedule (Brisbane)

Tour	Price	March
Whale Watching	<b>\$125</b>	Sun 26/6
Stradbroke Island	<b>\$65</b>	Sat 2; Sat 16 Sat 30
Byron Bay	<b>\$60</b>	Sat 9; Sat 23
Mt Tamborine	<b>\$60</b>	Sun 10; Sun 24
Springbrook	<b>\$50</b>	Sun 3; 17; 31
Snow Trip	<b>\$255</b>	Fri 17- Sun 19



- Key**
-  Sunshine Coast line
  -  Nambour line
  -  Caboolture line
  -  Roswood line
  -  Ferry Grove line
  -  Bendigh line
  -  Dooman line
  -  Cleveland line
  -  Shorncliffe line
  -  Alpine Inland line (operational from apply)
  -  Gold Coast line
  -  Exhibition line and station (Open for special events only. Special fares apply.)
  -  South East Busway
  -  Northern Busway
  -  Eastern Busway
  -  Central-PA Hospital rail bus
  -  Nambour-Caboolture rail bus
  -  Heddon-Roswood rail bus
  -  Toogoolawah-Bendigh rail bus
  -  Eagle Junction-Myrtle town rail bus
  -  connecting station
  -  stair number
  -  wheelchair access
  -  stairs without wheelchair access

Effective December 2009

**Rails**  
 The map displays the connecting rail services of QR stations. These rail services are not shown on this map. They may be available to connect with bus services at certain stations.  
 For details call 13 12 30 anytime or visit [www.translink.com.au](http://www.translink.com.au).  
 Open services do not stop at all stations depicted on this map. Please refer to separate line timetables for details.  
 Most QR services are one way only and provide free park 'n' ride facilities.  
 If services to and from the Airport are available along the Airport you are operated by Airlink. Contact Airlink on 08 553 3300 to purchase a contract for services with QR.  
 \*Gold Coastline services stop at Park Road at all peak only.

